

POWERMOTION TECHNICAL SPECIFICATIONS



POWERMOTION SPECIFICATIONS CONTENTS

Section 1 Introduction	3
Section 2 Product Summary	4
Section 3 Product Specifications	5
Section 4 PowerMotion Configuration	6
Section 5 Tracked Shutters	8
Section 6 Motor Installations	10

1. POWERMOTION INTRODUCTION

Product Summary

A fully integrated upgrade option that allows seamless motorisation of louvre positions with one remote control.

- Available to order in the following specifications: Craftwood MDF, Silkwood, Hardwood, Peralwood and Ultra
- Available only in Silent Tilt
- All shutter installation types except bi-fold double hung panels
- Eight pre-programmed louvre positions and one custom position
- Manual over-ride – louvres can be tilted by hand or remote without the need to disengage the motor manually
- Long lasting Lithium-ion batteries (up to a years use on a single charge)
- Rechargeable via USB cable
- Solar panel installed for optimising battery life
- Built-in jam protection for child and pet safety



N.B: For remote operating instructions see separate specification sheet.




2. PRODUCT SUMMARY

Included: Remote, Wall Dock, MS4 Motor (pre-installed to shutter panel), USB Charging Cable
Optional Extras: Colour Ring Kit

INCLUDED

Image	Product	Information
	Remote and Wall Dock	Black coloured base ring provided as standard. Colour ring kit available at surcharge. Operating distance 100m Dimensions: 68mm x 21mm
	MS4 Motor (pre-installed to each louvred section)	For painted shutters the MS4 Motor will be colour matched, exceptions to this are Pure White, Silk White and Pearl where the MS4 motor colour will be white. One MS4 Motor required per louvred section. Initial charge required which may take up to 10 hours. Do not remove the batteries from the MS4 motor. Doing so will void the warranty provided.
	Micro USB Charging Cable	3m Micro USB Cable for re-charging your MS4 Motor

OPTIONAL EXTRAS

Image	Product	Information
	Colour Ring Kit	Includes: white, grey, bronze and red rings

3. PRODUCT SPECIFICATIONS

SPECIFICATIONS

Material	Craftwood MDF, Silkwood, Hardwood, Peralwood and Ultra	
Shutter installation style	Available in all installation styles apart from bi-fold tier-on-tier or a panel with gap at the bottom over 2.54mm (no bottom support).	
Special Shapes	Available in all special shapes without a vertical stile in the middle (for example: eyebrow, elongated eyebrow, half-round sunburst without horizontal louvres).	
Tilt System	Silent tilt only, the tilting system will not split unless specified.	
Stile Width	57mm stile only	
Louvre sizes	63mm 76mm 89mm 114mm	
Panel Size Limit	<p>Max. panel height without divider rail: 1879.6mm for Craftwood MDF 1981.2mm for Silkwood, Hardwood and Pearlwood 2133mm for Samoa.</p> <p>Min. panel height width limit: 220mm; Max width limit: same as standard non-motorised shutters (refer to relevant specs).</p>	
Panel Size Limit	Min. panel height with lined up motors	457mm
Panel Size Limit	Min. panel height with staggered motors (which is default for 180 degree bi-fold track shutters; and optional for other shutter types).	Space between the louvres is not less than 660mm. minimum 13 louvres for 63mm louvre 11 louvres for 76mm louvre 9 louvres for 89mm louvre 7 louvres for 114mm louvre

4. POWERMOTION CONFIGURATION

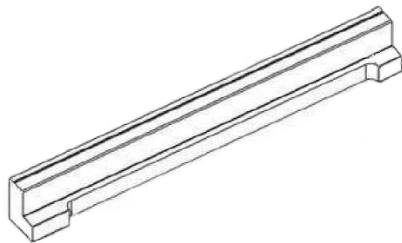
For your convenience the remote and MS4 motor pairing has already been completed during production.



Group 1: Controls shutters on the right wall
 Group 2: Controls shutters on the centre wall
 Group 3: Controls shutters on the left wall

If there is a mid-rail or split tilt:
 Group 4: Used for all upper louvre sections
 Group 5: Used for all lower louvre sections

If there is no mid-rail or split tilt:
 Group 4: Used for all shutters



Frame Cut-Out

For single panels (i.e. L or R) the MS4 Motor location will conflict with the light block frame, therefore there will be a cut-out on the light block to allow the panel to close into the frame. The length of the cut out is 335mm.

Clearance

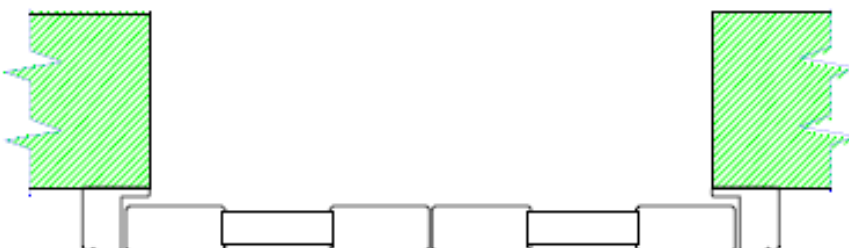
The MS4 Motor will protrude 15.5mm from the back of the panel's stile, please allow 17mm clearance for the motor.

Examples of situations where PowerMotion would not be possible unless a build-out is added to the frame:



Hang Strip Outside Mount

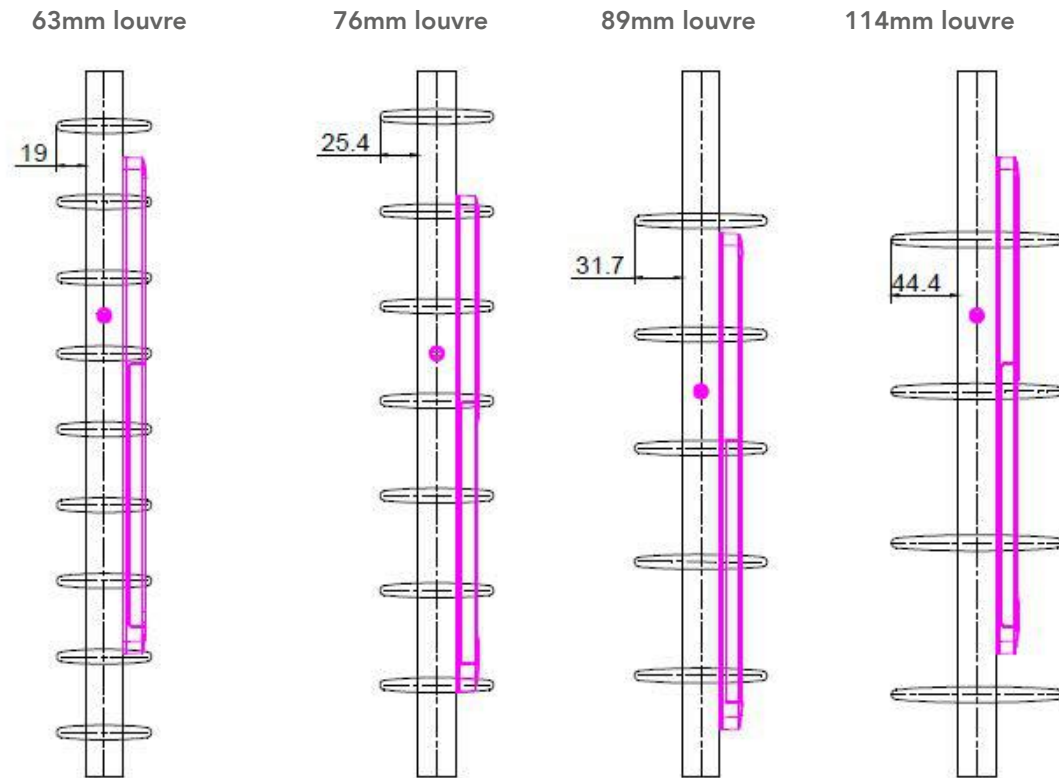
When the MS4 Motor is on the left/right of the stile, the protrusion will conflict with the wall.



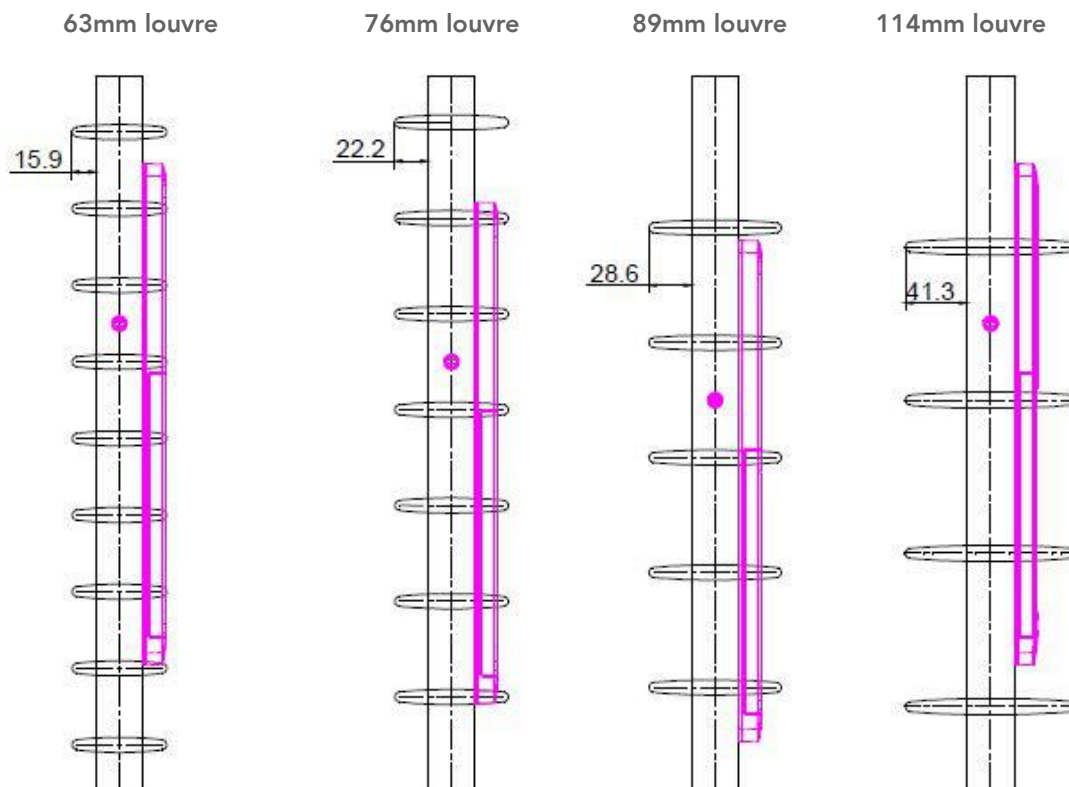
L frame with light block thickness less than 19mm outside mount.

When the MS4 Motor is on the left/right of the stile, the protrusion will conflict with the wall.

Side view of the MS4 Motor in panel in Ultra range:

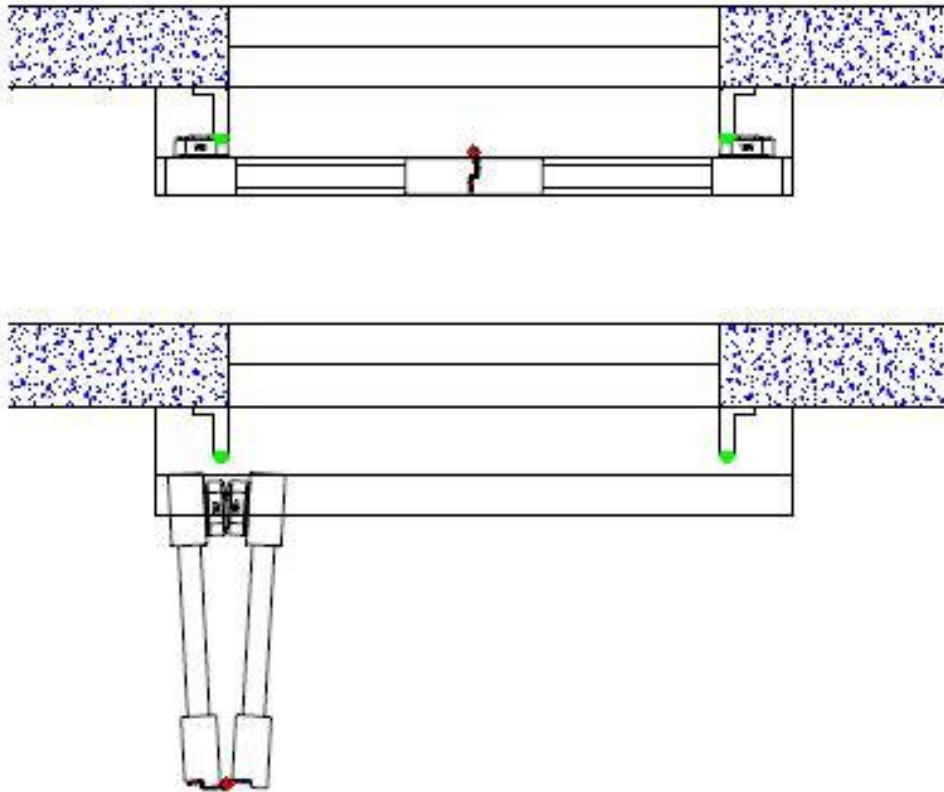


Side view of the MS4 Motor in panel in Craftwood MDF, Silkwood, Hardwood and Pearlwood ranges:



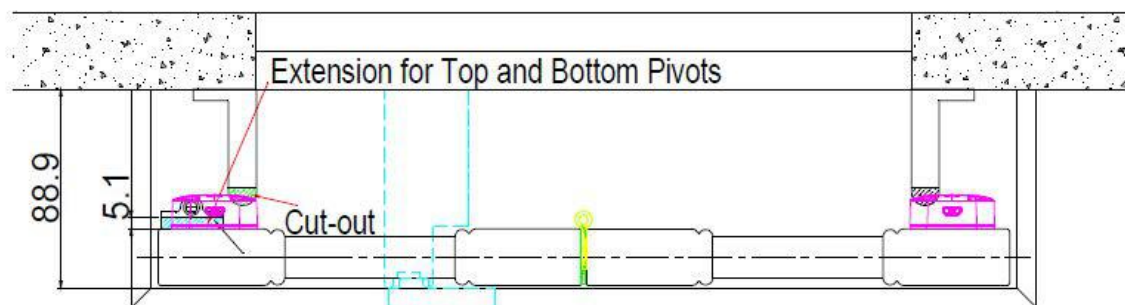
5. TRACKED SHUTTERS

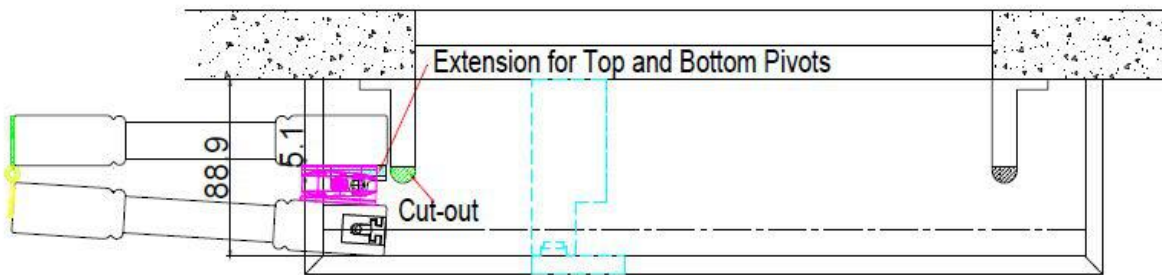
Both 76mm and 88.9mm headers are available. The L shape light block will be cut out 6mm to avoid conflict with the MS4 Motor as shown below.



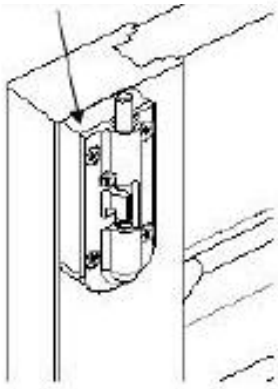
Bi-Fold Tracked Shutters

1. For Craftwood MDF, Silkwood, Hardwood and Pearlwood - the default header width is 88.9mm, the minimum header width is 82.5mm so for a 76.2mm header a 6.35mm extension would be required.
2. For Ultra the minimum header width is 95.25mm so for a 89mm header a 6.35mm extension would be required.
3. The L Shape light block will be cut out to avoid conflict with the MS4 motor. A 5.1mm build out is required for installation of the top and bottom pivots.

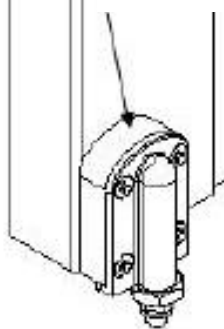




Extension for top pivot



Extension for bottom pivot



The MS4 Motor will be installed on the same side as the silent tilt system.

Please note that in bi-fold or multi-fold configurations as the MS4 Motors protrude the stile by 15.5mm, the panels will not fold as close together as panels without the MS4 Motor installed.

Before folding the bi-fold or multi-fold panels ensure that the louvres are in the closed position to prevent damage.

6. MOTOR INSTALLATIONS

Examples of standard shutter MS4 Motor installation

For Single panels, the MS4 Motor will be installed on the un-hinged stile
For 2 Panels (LR, LL or RR) the MS4 Motor will be installed as follows:



For 3 Panels (LLL or RRR) the MS4 Motor will be installed as follows:



For 4 Panels (LLRR, LLLL, RRRR) the MS4 Motor will be installed as follows:

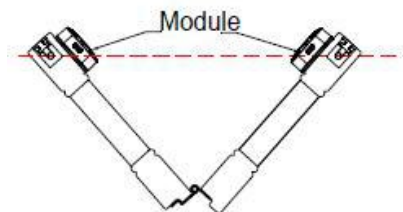


For 6 Panels (LLLLL and RRRRR) the MS4 Motor will be installed as follows:

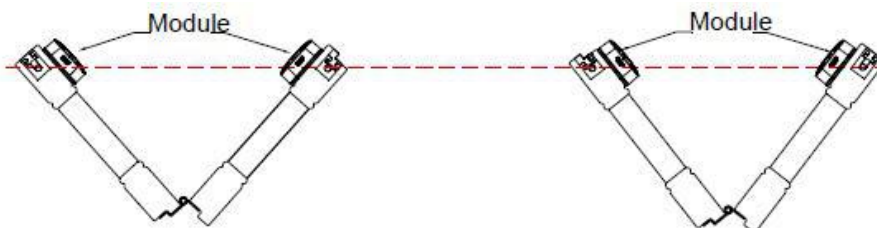


Examples of 90° bi-fold tracked shutters

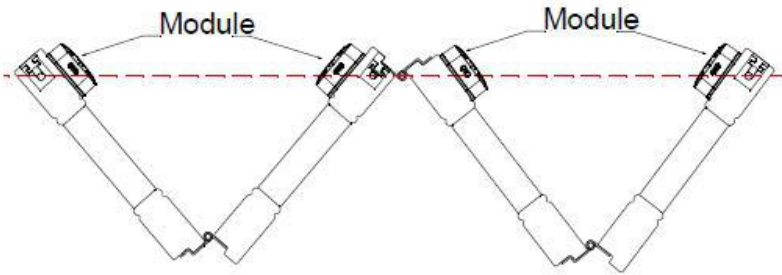
For LL and RR the MS4 Motor will be installed as follows:



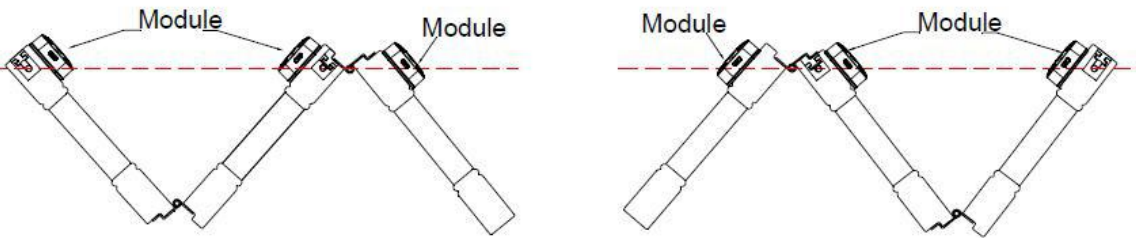
For LL and RR the MS4 Motor will be installed as follows:



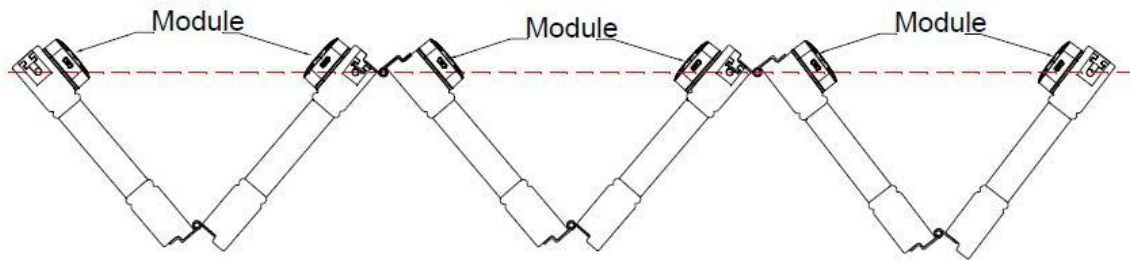
For LLL and RRR the MS4 Motor will be installed as follows:



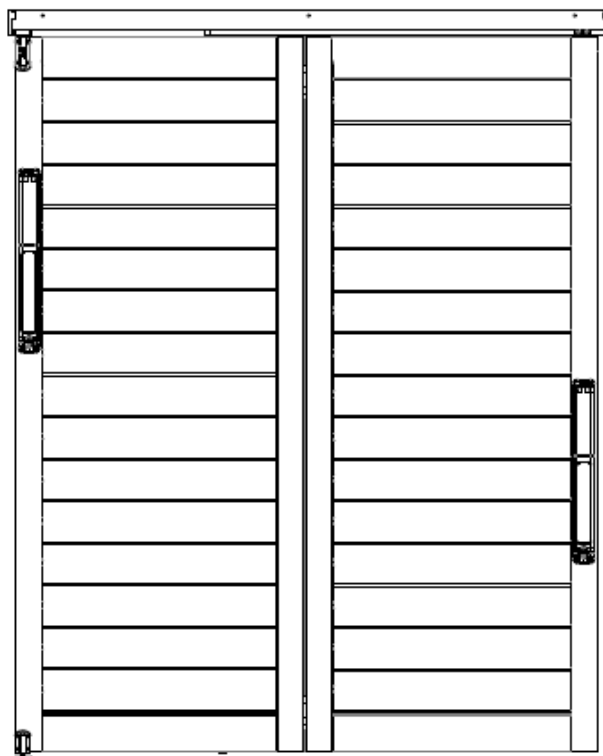
For LLL and RRR the MS4 Motor will be installed as follows:



For LLLLLL or RRRRRR the MS4 Motor will be installed as follows:

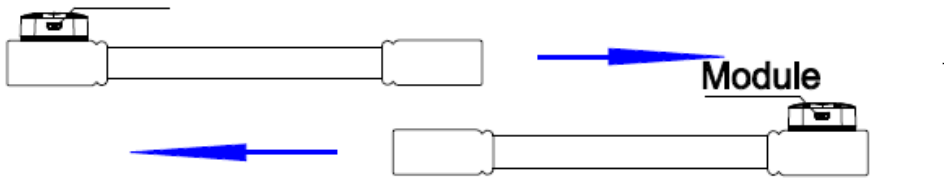


For 180* bi-fold tracked shutters, the MS4 Motors will be staggered as shown below:

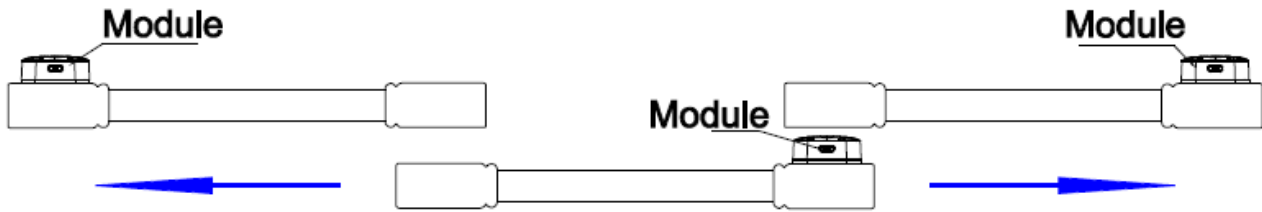


Examples of standard shutter MS4 Motor installation

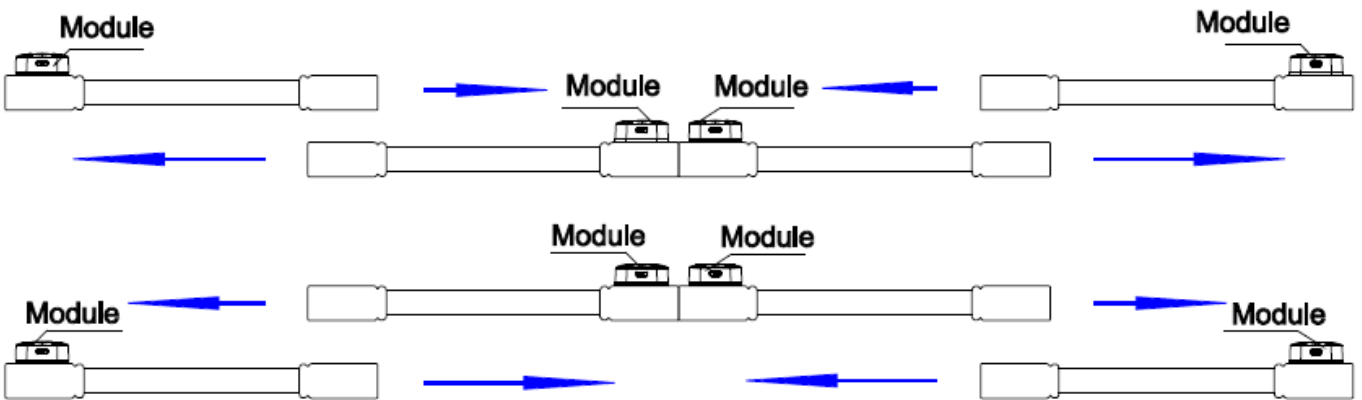
For two panels side opened the MS4 Motor will be installed as follows:



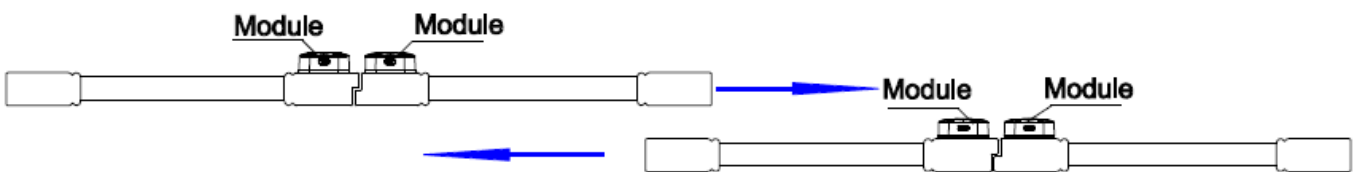
For three panels centre opened the MS4 Motor will be installed as follows:



For four panels centre opened the MS4 Motor will be installed as follows:



For four panels side opened the MS4 Motor will be installed as follows:



N.B: For special shapes the MS4 Motor will be installed the same side as the silent tilt location.

Plantation Shutters Ltd

Unit 10 River Reach Business Park
1 Gartons Way
Battersea
London
SW11 3SX
Tel: 020 8871 9222

www.plantation-shutters.co.uk

Emma - Sales Advisor

emma@plantation-shutters.co.uk