

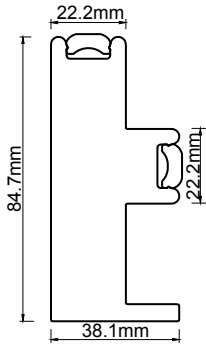
# ROOM DARKENING TECHNICAL SPECIFICATIONS



# ROOM DARKENING SHUTTER & SHADE

## ROOM DARKENING BLIND OPTION

### DOUBLE INSERT F FRAME



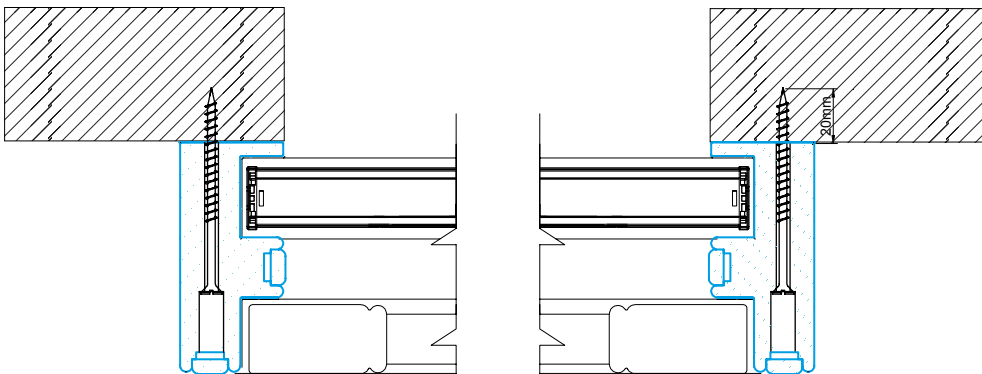
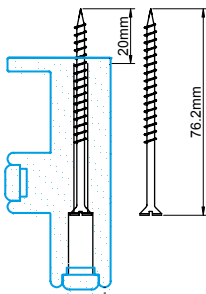
Double Insert F Frame  
84mm

\*NOTE: When you order Room Darkening blinds and the frame has a T post please note the defaulted specification below:

- If there is no build out with T post, then the Room Darkening blind will be defaulted to one blind sitting behind the T post.
- If there is build out with T post then the Room Darkening blind will be split according to the T post.
- For Double Insert F Frame 84mm, holes for screws will be predrilled. For inside mount, 63.5mm will be supplied and screw hole predrilled under the side insert. For outside mount, 76.2mm screw will be supplied and screw hole predrilled under the front insert. For orders not specified the mount type, no screw holes will be predrilled but 76mm screw will be supplied.

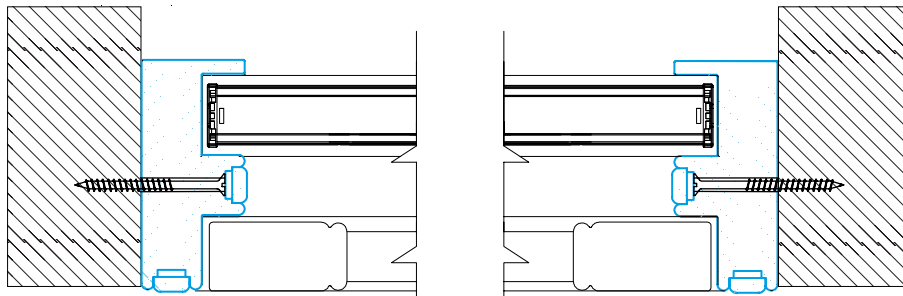
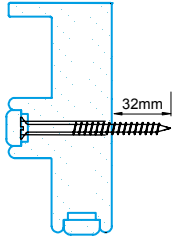
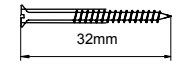
## 2. Frame mounting:

### Outside Mount



### Inside Mount

Will require a minimum depth clearance 30mm. If it is a bay window inside mount, the top and bottom cover strips will be cut flush on both ends, their length = each section frame outer dimension + 50mm



### 3. Number of frames:

3 sided (top, left & right) and 4 sided.

### 4. Available shutters:

All rectangular shutters only.

### 5. Available cellular shade:

25mm corded system cellular shade-room darkening.  
Pull cord is defaulted to the right side.

\* The cord cleat will be on the light block between the shutter and shade.

### 6. Size limit:

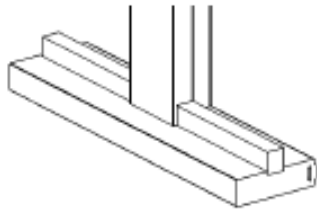
	Min. Size	Max. Size	Max. Area
Width	220mm	2500mm	5.5m <sup>2</sup>
Height	250mm	3600mm	5.5m <sup>2</sup>

\* The above chart does not mean that a shade can be ordered in maximum width and maximum height.

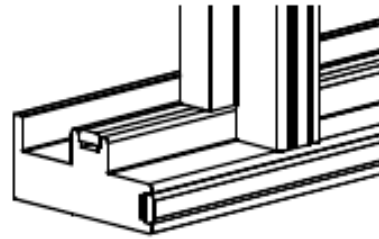
\* The shade width and drop must be within the size limitations above and not exceed max area.

If there is a T-Post, Corner/ Bay post, it will be made as below:

1. If the shade behind is for one whole piece, the post and frame will be jointed as picture below:

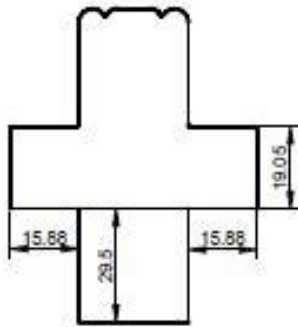


Vantage Hang Strip  
76mm

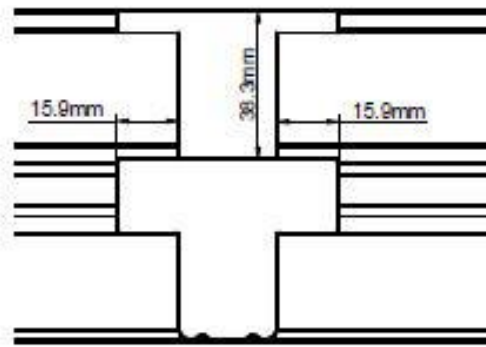


Double Insert F Frame  
84mm

2. If the shade behind is divided into several pieces by the T-Post, Corner/ Bay post, then T-post, Corner/ Bay post need to add 29.5mm (hang strip)/38.3mm (Double Insert F frame 84mm) build out at back for the standard frame depth. See picture below:

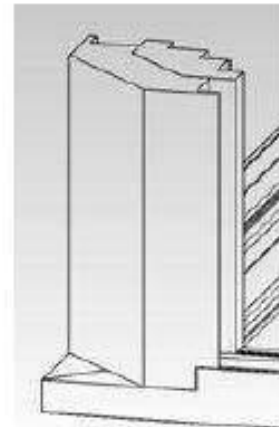
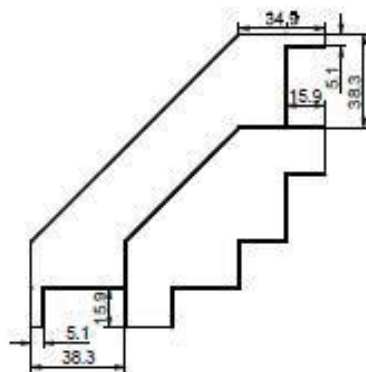
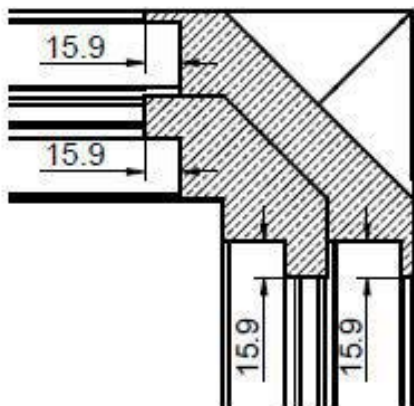


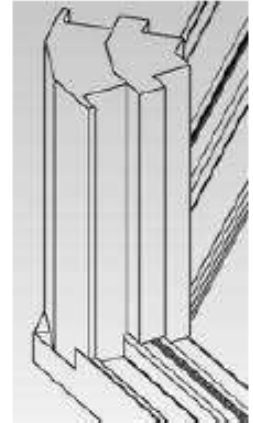
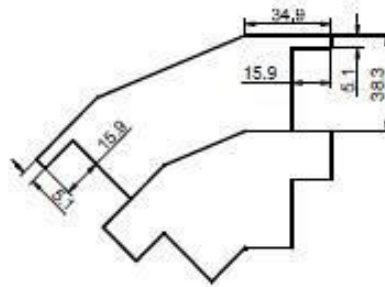
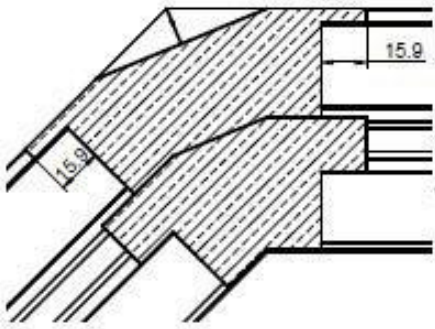
Vantage Hang Strip  
76mm



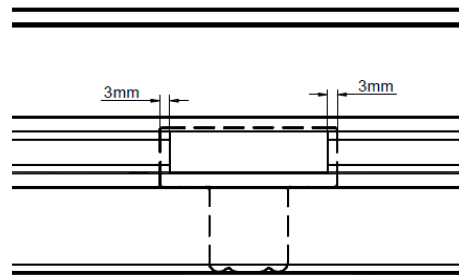
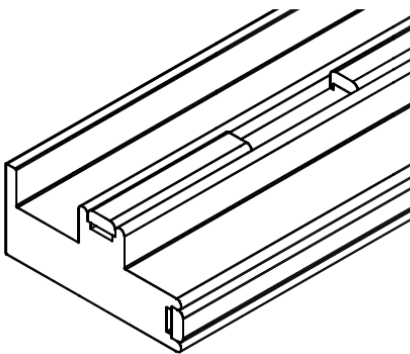
Double Insert F Frame  
84mm

For Corner/ bay post, take Double Insert F frame 84mm frame as example:





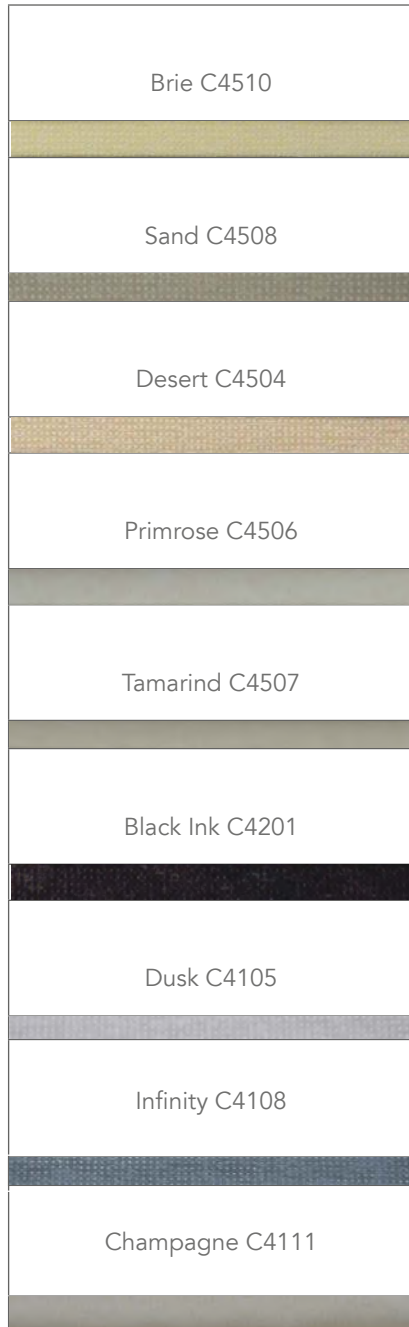
3. For Double Insert Frame 84mm with T-Post , the insert for the Double Insert F Frame 84mm will be cut at the bottom of the posts and there is a 3mm overlap between insert and post. See picture below:



## ROOM DARKENING BLIND STACKING HEIGHTS

Shade Height (mm)	Stacking Height (mm)	Shade Height (mm)	Stacking Height (mm)
	Room Darkening		Room Darkening
254	39	1651	77.8
279.4	39.8	1676.4	78.6
304.8	40.6	1701.8	79.4
330.2	41.4	1727.2	79.8
355.6	42.2	1752.6	80.6
381	43	1778	81.4
406.4	43.8	1803.4	82.2
431.8	44.6	1828.8	83
457.2	45.4	1854.2	83.4
482.6	45.8	1879.6	84.2
508	46.6	1905	85
533.4	47.4	1930.4	85.8
558.8	48.2	1955.8	86.2
584.2	49	1981.2	87
609.6	49	2006.6	87.8
635	49.4	2032	88.6
660.4	50.2	2057.4	89.4
685.8	51	2082.8	89.8
711.2	51.8	2108.2	90.6
736.6	52.6	2133.6	91.4
762	53.4	2159	92.2
787.4	54.2	2184.4	93
812.8	54.6	2209.8	93.4
838.2	55.4	2235.2	94.2
863.6	56.2	2260.6	95
889	57	2286	95.8
914.4	57	2311.4	96.6
939.8	57.8	2336.8	97
965.2	58.6	2362.2	97.8
990.6	59	2387.6	98.6
1016	59.8	2413	99.4
1041.4	60.6	2438.4	100.2
1066.8	61.4	2463.8	100.6
1092.2	62.2	2489.2	101.4
1117.6	62.6	2514.6	102.2
1143	63.4	2540	103
1168.4	64.2	2565.4	103.4
1193.8	65	2590.8	104.2
1219.2	65.8	2616.2	105
1244.6	66.2	2641.6	105.8
1270	67	2667	106.6
1295.4	67.8	2692.4	107
1320.8	68.6	2717.8	107.8
1346.2	69	2743.2	108.6
1371.6	69.8	2768.6	109.4
1397	70.6	2794	110.2
1422.4	71.4	2819.4	110.6
1447.8	72.2	2844.8	111.4
1473.2	72.6	2870.2	112.2
1498.6	73.4	2895.6	113
1524	74.2	2921	113.8
1549.4	75	2946.4	114.2
1574.8	75.8	2971.8	115
1600.2	76.2	2997.2	115.8
1625.6	77	3022.6	116.6

**ROOM DARKENING BLIND  
25MM COLOURS**



Plantation Shutters Ltd  
Unit 10 River Reach Business Park  
1 Gartons Way  
Battersea  
London  
SW11 3SX  
Tel: 020 8871 9222

[www.plantation-shutters.co.uk](http://www.plantation-shutters.co.uk)

**Emma - Sales Manager**  
[emma@plantation-shutters.co.uk](mailto:emma@plantation-shutters.co.uk)